



clean air solutions

**AUFERO**  
product line

# ENS CLEAN AIR SOLUTIONS

**Our mission is to create a healthy living environment that prioritizes quality of life**

ENS Clean Air is a Dutch company specialising in air quality improvement strategies and technologies. Our particular focus is on reducing exposure to particulate matter and emission control in the built environment and industry.

We offer customized advice, insight and solutions that fit everyone's unique situation. With over 15 years of experience, we've built extensive expertise in measurement, modeling, and practical improvement strategies.

## SUSTAINABLE AIR PURIFICATION FOR CLEANER ENVIRONMENTS

The Aufero is the trademark ENS Clean Air purification system that effectively eliminates particulate matter, quartz dust, odor and other air pollutants **without the use of filters**. Considering its capacity, the Aufero is the most **energy-efficient** air treatment device in the market, available in two different designs with multiple options and placement possibilities. When applied strategically, it is possible to achieve **high reduction levels** in public spaces, in work environments or at emission points, resulting in much cleaner air and healthier environments.

### AUFERO PRODUCT LINE

The Aufero product line consists of three types of air purification systems: Aufero 7500, Aufero 2500, and Aufero 2100. Due to a smart design, the Aufero 2500 and Aufero 2100 appear identical, but both types have been optimized in other aspects.

#### AUFERO 7500 - MAXIMUM EFFECT

Designed for maximum performance, the Aufero 7500 is engineered to treat large volumes of air in the most energy-efficient way.

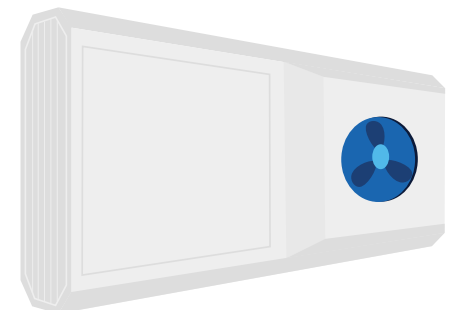
- ✓ Free standing placement
- ✓ Ceiling mounted optional
- ✓ Plug and play (230 VaC)
- ✓ Accessible from both sides



#### AUFERO 2500 & 2100 - SMART & EFFICIENT

The Aufero 2500 and Aufero 2100 are designed for space efficiency and targeted treatment in confined spaces. The Aufero 2500 excels in air treatment capacity, while the Aufero 2100 prioritizes minimal energy use and lower sound intensity.

- ✓ Wall or ceiling mounted
- ✓ Reversible air flow optional
- ✓ Plug and play (230 VaC)
- ✓ Easily Accessible from one side



## CLEAN AIR SERVICE - CUSTOM SOLUTIONS

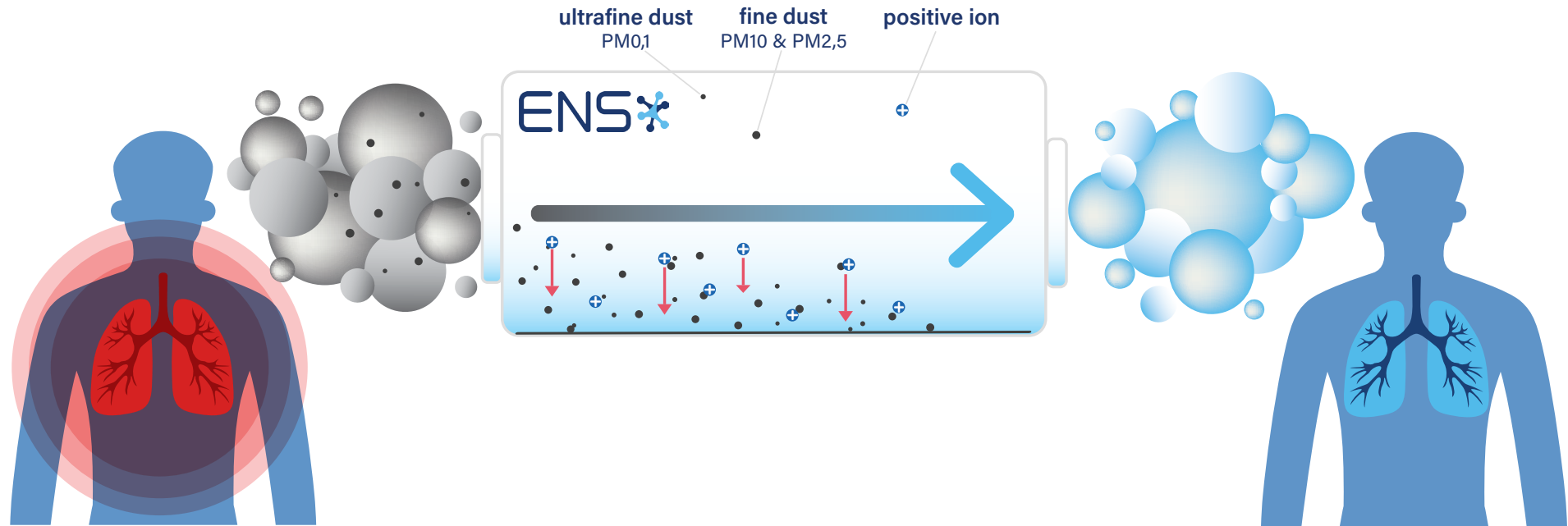
Based on a building and environmental analysis, we develop a custom-made installation strategy of combined solutions with Aufero's. This solution is scalable to effectively treat all desired air volumes based on your location.

- ✓ Custom solutions
- ✓ End-of-pipe
- ✓ Scalable effect
- ✓ Aufero technology



## ENS MAKES THE INVISIBLE, **VISIBLE**

The Aufero product line uses a patented technology to eliminate dust particles as particulate matter, odor, smoke and other pollutants. During the process, particulate matter becomes electrically charged, causing small particles to aggregate into coarser particles that are no longer respirable. The coarse residue is collected on a collector plate which eliminates the health hazard.



### BENEFITS



No filters



Low energy  
consumption



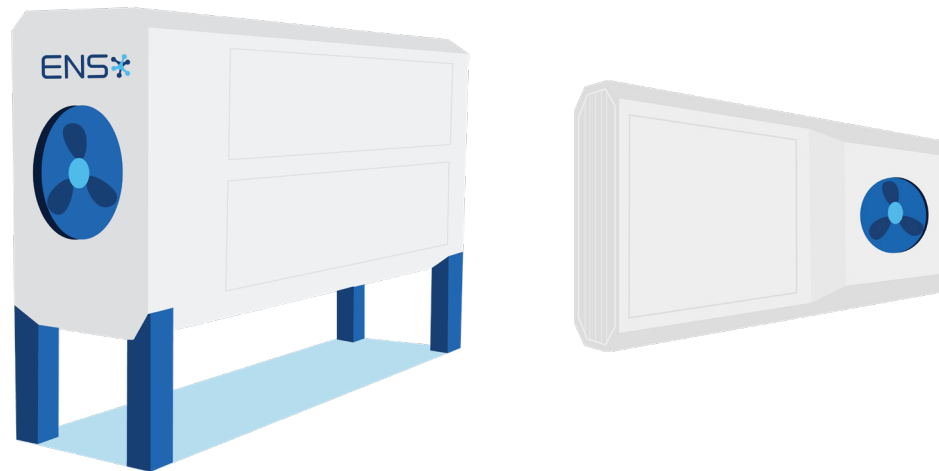
All air  
volumes



Custom  
solution

# AUFERO PRODUCT LINE

## SPECIFICATIONS



TECHNICAL SPECIFICATIONS	AUFERO 7500	AUFERO 2500	AUFERO 2100
Air flow rate	~7300 m <sup>3</sup> /h	~2550 m <sup>3</sup> /h	~2150 m <sup>3</sup> /h
Electrical power consumption	340 W	220 W	160 W
GENERAL INFORMATION			
Weight	385 kg	140 kg	140 kg
Dimensions (l x w x h)	2800 x 720 x 1250 mm	2160 x 860 x 370 mm	2160 x 860 x 370 mm



## UPGRADE YOUR AIR PURIFICATION EXPERIENCE



### REMOTE MONITORING

Through a personalized dashboard, you gain real-time insights into the performance of your systems.



### REMOTE CONTROL

This feature allows you to manage and control systems remotely.



### BRANDING

By applying custom stickers, you can use the systems for branding or as a communication tool.

## OPTIMAL SYSTEM PERFORMANCE

Regular maintenance and cleaning are essential to ensure the optimal functioning and lifespan of our systems. We offer three services that can be customized to your specific needs and location.

### FULL SERVICE CONTRACT

Complete care based on the service contract

- ✓ Annual thorough cleaning sessions
- ✓ Preventive and corrective maintenance
- ✓ All service costs in a contract

### ESSENTIAL MAINTENANCE

Flexible contract where critical components are maintained

- ✓ Annual preventive maintenance
- ✓ Cleaning as part of your routine
- ✓ Additional cleaning available on request

### TRAINING & EDUCATION

Train your staff to clean the systems independently

- ✓ On-site training
- ✓ Online training
- ✓ Comprehensive manual for support



## HOW WE WORK

We work with our customers to find the best solution for their air quality challenges. Every location is different and therefore needs its own solution. The **Aufero product line** can be installed as a stand-alone system or incorporated into a customized strategy as part of our **Clean Air Service**. Our team of airflow specialists and engineers will support you every step of the way—offering expert advice and guidance to localize, plan, and implement the most effective solution for your space.



### ORIENTATION

Observation and evaluation of the location, existing ventilation ducts and air flows



### ANALYSIS

Assessment of required capacity and expected performance for optimal results



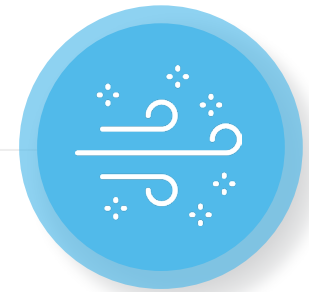
### ADVICE

Integration advice and visualization for Aufero and air purification measures



### IMPLEMENTATION

Engineering and installation of the Aufero's on location



### SERVICE

Service contracts for maintenance and/or employee training

## CLEAN AIR CITY CERAMICS

Particulate matter captured by the Aufero is sustainably recycled. Because our technology works entirely without filters, the dust is collected directly and retained within the system. During regular maintenance, this dust is carefully removed. In collaboration with **Studio Christine Jetten**, the material is given a new life: it is processed into glaze for ceramics. The developed glazes respond to the origin of the fine dust and add a unique, architectural value. In this way, a circular solution is created in which the captured dust safely and aesthetically returns to the urban environment.



**REDUCE**  
particulate matter



**REUSE**  
accumulated waste



**REINTRODUCE**  
circular glazes





**STONE PROCESSING  
INDUSTRY**



**CAR PARK**



**FOOD & FEED  
INDUSTRY**



**COATING INDUSTRY**



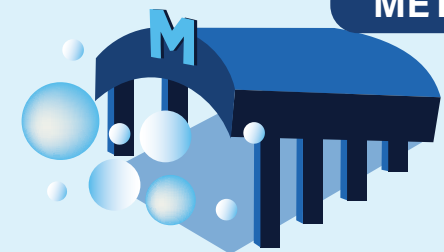
**PLAYGROUND**



**STREET SWEEPER**



**METRO**



## GET IN TOUCH

Would you like to schedule an appointment or learn how we can help?  
Our team is here to support you — feel free to reach out.

**ENS Clean Air Solutions** HQ

Torenstraat 28 5438 AP Gassel Netherlands

[www.ens-cleanair.com](http://www.ens-cleanair.com) [info@ens-cleanair.com](mailto:info@ens-cleanair.com) +31 (0) 486 423 378